

Semi-Automatic 2-piece Wire Stripping and Terminalizing Machine

High-end automotive wiring harness | BBA Specified Models

TR-BD06

2000-2500pcs/hour
(2 core wire)

Automatic Wire Splitting

Cassette mold

Stripping and terminating



Selling points of this machine:

1. Fully intelligent touch screen control, foolproof operation
2. Fast touch start
3. Cassette mold and stripping parts are independent of each other.

Craftsmanship

Build high quality machines



STRENGTH
MANUFACTURERS



AFTER-SALES
SERVICE



SUPPORT
CUSTOMIZATION



TECHNICAL
GUIDANCE



DURABLE



REAL MATERIAL



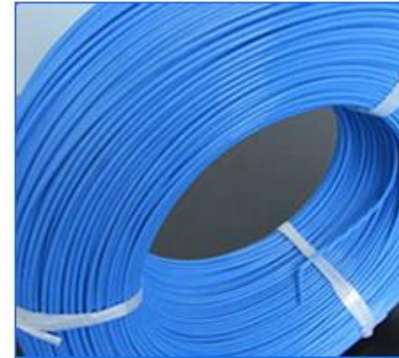
Applicable wires



tinned wire



electronic wire



Silicon thread



Multi-core
over powder line



multi-wire



powerstrip



Sample effect

Precision craftsmanship · Excellent quality

Suitable for electronic wires, multi-core wires, protective sleeves,
row of wires and other wiring harness processing industry





Product Parameter

Equipment Name	TR-BD06 Semi-automatic 2 splicing line stripping and playing terminal machine
Applicable wires	AV, AVS, AVSS, CAVUS, KV, KIV, UL, fiber wire, etc.
Size	960mm*450mm*1950mm
power supply	0.75kW AC 200V-240V 50/60 HZ
capacities	2000-2500 pcs/hour (2 core wires)
Casing Compatibility Range	φ1.5mm-2.5mm
Maximum core processing	Double parallel 2 core
Stripping range	Split line:30mm Cutting length:0-50mm
Stripping Length	1.0mm~10.0mm
Cutting Error	0.05mm~0.1mm
Weights	120KG
Positioning error	0.05mm~0.1mm
Crimp Terminal	Open type continuous terminal (cross feed, straight feed)
Crimp Capacity	2T
Stroke	30mm



Equipment layout

Name	Brand	Quantity/Unit
AC Motor 750W	Taibang	1pc
Stepping motor	Jamecon	5pcs
Solenoid Valve	Adecco Taiwan	Several
Cylinder	Adecco Taiwan	Several
PLC controller	Sincere/Panasonic	1pc
Touch screen	Taiwan Virent	1pc
Screws	Taiwan PMT	1pc
Guide rail	Taiwan Shangyin	1pc
Power supply	Taiwan Meanwell	2pcs



Product Details

Good quality, look at the details



Chinese and English touch screen

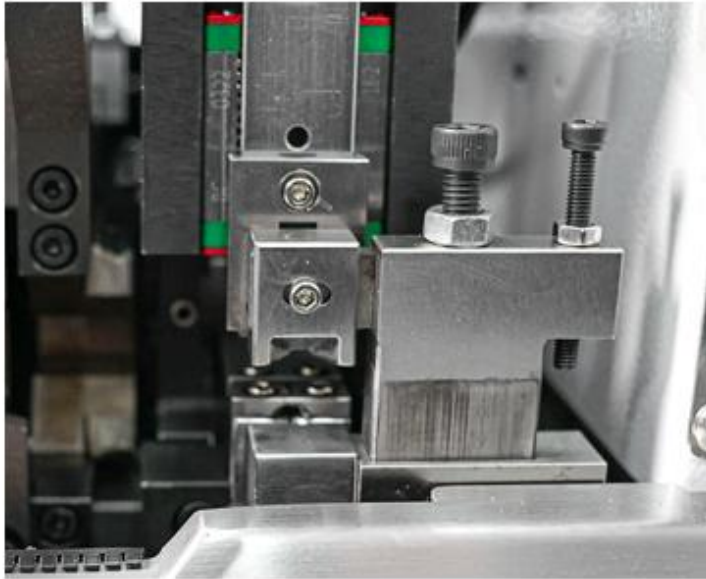
Chinese and English liquid crystal display, one-key operation of all parameter settings, at any time to monitor the real-time status of the machine. Simple operation, convenient equipment debugging.



Stripping device

Cassette mold and peeling parts are independent, easy to replace the cassette mold, peeling depth adjustable, production applicability. Quick and easy to install, accurate single and double-ended end pressing with high efficiency and good stability.





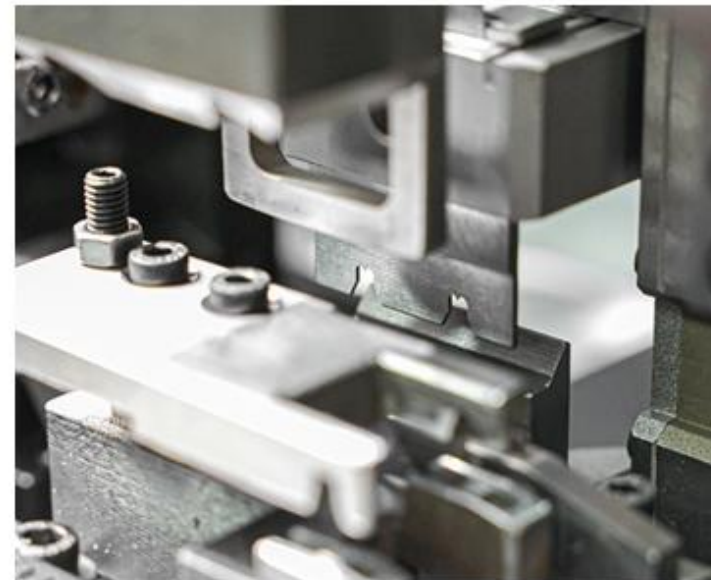
Splitting device

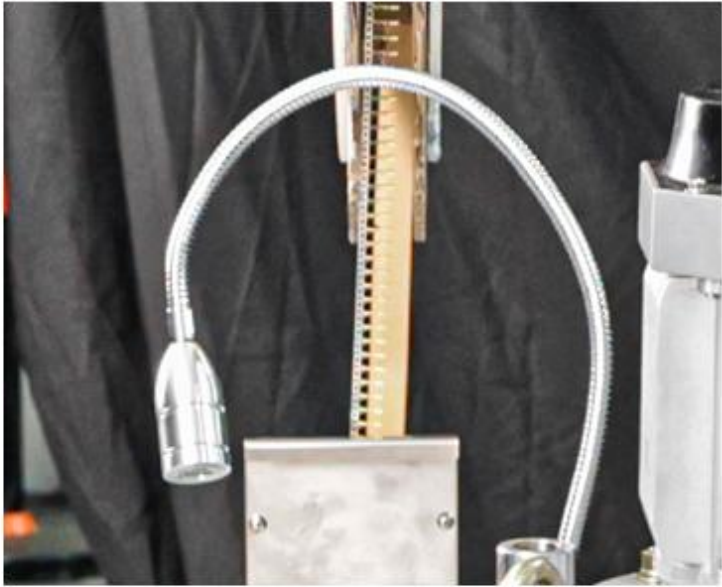
Built-in limit block, manual wire release to the end triggered by automatic wire separation



Cutting device

Precision casting heating high hardness parts, with precision steel Casting blade wire cutting and stripping accurately in place, clean and sharp. clean and sharp.





LED lighting

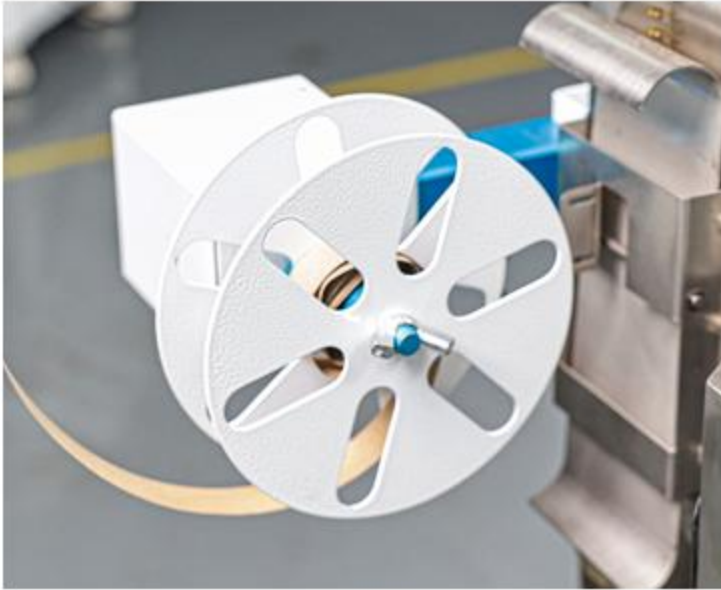
Energy saving, long service life, clear spotlight, not blinding, easy to debug molds



Cable clamping device

Robot clamping line, higher efficiency. Imported track control stroke, work fast, stable, accurate, eliminating the need to manually take the tedious steps of the line





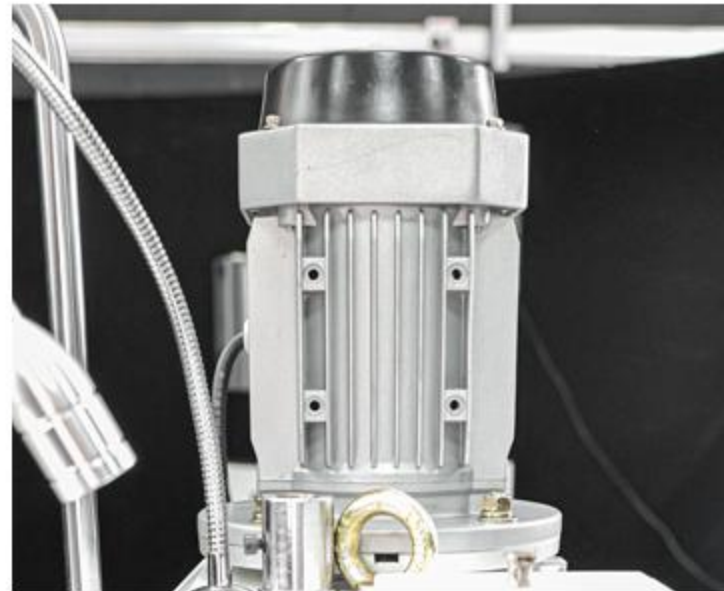
Waste material recycler

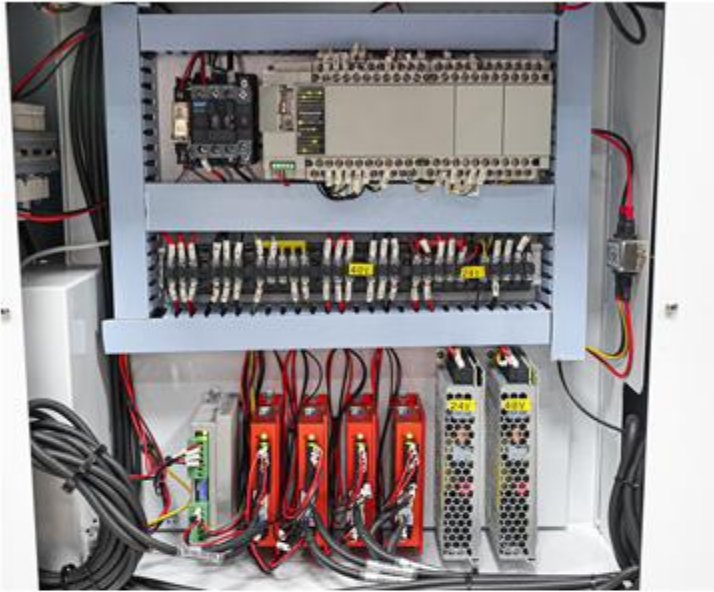
With a waste recycling shaft for easy post-cleaning.



Stepping motor

High-quality motor, operating noise is small current smooth. Low heat generation, stable performance, strong power





core control area

Panasonic PLC, two Taiwan Meanwell power supply, five step motor drive progressive motor drive



Terminal machine control panel

Microcomputer control panel is easy and convenient to adjust with counting function, can realize continuous beating and speed adjustment





Product Size





Product Structure Diagram





Product Display



